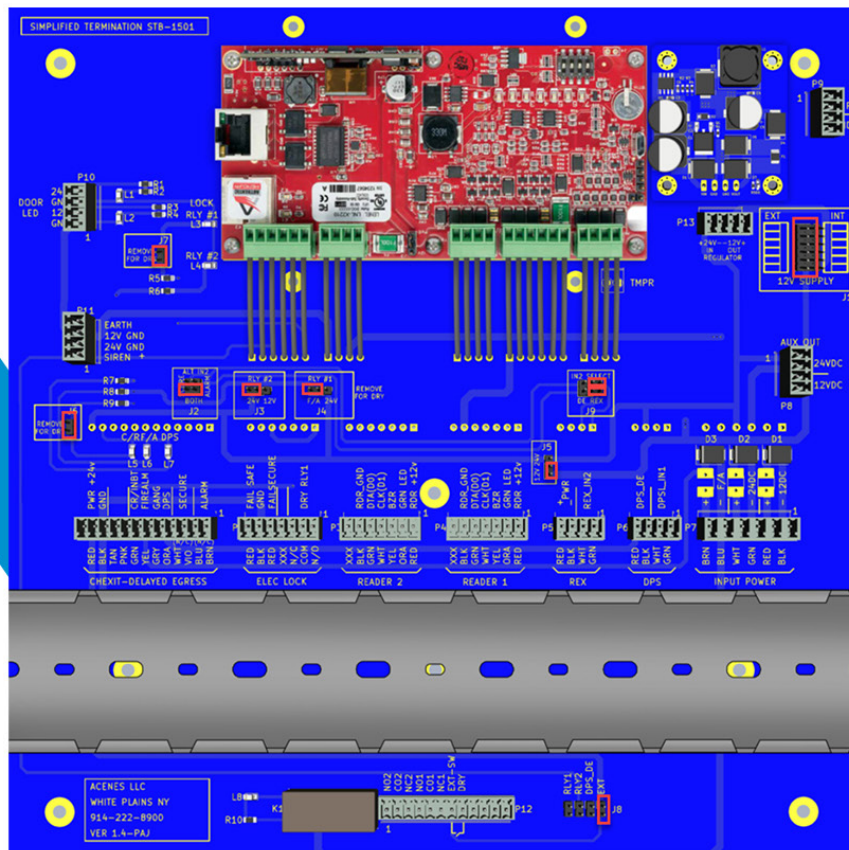


PART# STB-1503

STB-1503



Innovative Solutions for Security

Acenes LLC.

155 Lafayette Ave.

White Plains, NY 10603 US

+914 233 1400

sales@acenesllc.com



Name:	STB-1503
Acenes Part:	STB-1503
Name Memory Aid:	Simplified Termination Board
Display:	No
Input supervision:	No
Certification:	RoHS
Specifications:	UL, RoHS

Description:

Similar to the STB-1501 Simplified Termination Board – the STB-1503 simplifies the installation of the Mercury's LP1501 Intelligent Controller effortlessly by adding the internal 24V/12V regulator. STB-1503 offers simple, easily legible connectors for ease of installation by the field installers. It features a finger trough for cable management. STB-1503 is designed to fit into a 12"x12" enclosure.

Features:

- A pluggable 24V - 12V, 1A power supply. For more information, see VOLT24
- An optional Relay that can be used to control other access control systems or external devices
- Support for Externally mounted LED's to verify and display the board's input voltages
- Onboard LEDs for LP-1501 output relay state indication and AUX status
- Onboard LEDs for Delayed Egress input status - Reader/DPS/FA
- Jumper for the optional relay to be triggered via Relay 1 / Relay 2 / Delayed egress / any other external control mechanism

Configurable Items

- Jumpers to select the output relays of the LP-1501 dry/wet
- Jumpers to select the output relay 2 to trigger a Siren or Alarm
- Jumpers to select the voltage of the wet relay between the 12V or 24V bus
- Jumper to select the output relay 1 as fail safe/secure
- Jumper for the built-in relay to be triggered via relay 1 or relay 2 or delayed egress or any other external control mechanism