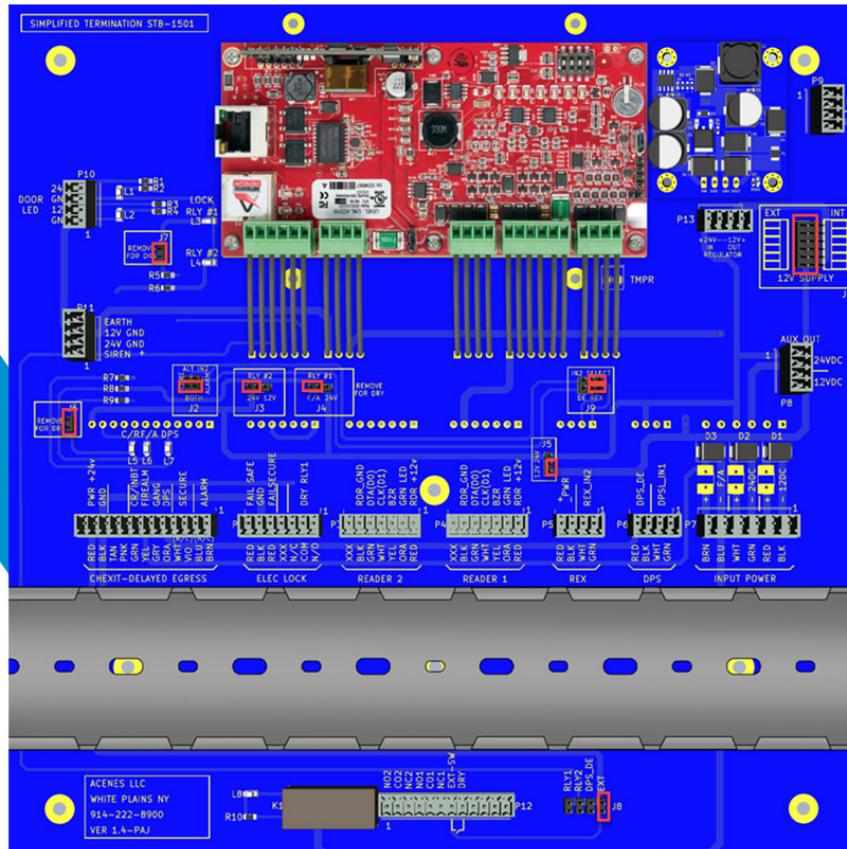


PART# STB-1501

STB-1501



Innovative Solutions for Security

Acenes LLC.

155 Lafayette Ave.

White Plains, NY 10603 US

+914 233 1400

sales@acenesllc.com



Name:	STB-1501
Acenes Part:	STB-1501
Name Memory Aid:	Simplified Termination Board
Display:	No
Input supervision:	No
Certification:	RoHS
Specifications:	UL, RoHS

Description:

Simplified Termination Board - 1501 as the name suggests is a product that makes the installation of the Mercury's LP1501 Intelligent Controller effortless.

STB-1501 offers simple, easily legible connectors for ease of installation by the field installers. It features a finger trough for cable management. STB-1501 is designed to fit into a 12"x12" enclosure.

STB1501 accommodates an optional 24V - 12V / 1 A power supply allowing support for mixed voltages at the door while being fed from a single, 24VDC source

Features:

- Support for Externally mounted LED's – Indicating 12V/24V power presence
- Onboard LEDs for LP-1501 output relay state indication and AUX status
- Onboard LEDs for Von Duprin's CHEXIT, Delayed Egress input status - Reader/DPS/FA
- Jumpers to select output relays of the LP-1501 dry/wet
- Jumpers to select the output relay 2 to trigger a Siren or Alarm
- Jumpers to select the voltage of the wet relay between the 12V or 24V rail
- Jumper to select the Lock output relay #1 as fail safe/secure
- Jumper for the built-in AUX relay to be triggered via relay 1 or relay 2 or delayed egress or any other external control mechanism

Configurable Items

- Jumpers to select the output relays of the LP-1501 dry/wet
- Jumpers to select the output relay 2 to trigger a Siren or Alarm
- Jumpers to select the voltage of the wet relay between the 12V or 24V rail
- Jumper to select the output relay 1 as fail safe/secure
- Jumper for the optional relay to be triggered via relay 1 or relay 2 or delayed egress or any other external control mechanism