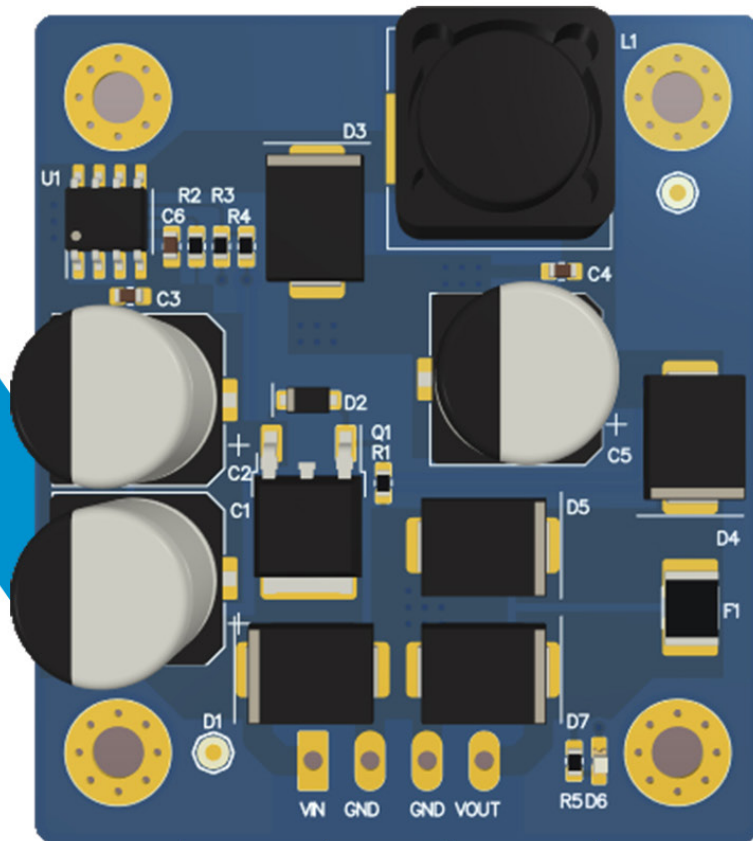


PART# VOLT-24x

# VOLT 2009



## Acenes

Innovative Solutions for Security

**Acenes LLC.**

155 Lafayette Ave.

White Plains, NY 10603 US

+914 233 1400

sales@acenesllc.com

**RoHS**  
Compliant

<b>Name:</b>	VOLT 2009
<b>Acenes Part:</b>	VOLT-24x
<b>Name Memory Aid:</b>	24-12V Voltage Regulator
<b>Display:</b>	No
<b>Input supervision:</b>	No
<b>Certification:</b>	RoHS
<b>Specifications:</b>	UL, RoHS

## Description:

The VOLT 24 is a step-down voltage regulator that generates 12V output from 24V input voltage. It is a fixed frequency PWM buck (step-down) DC/DC converter with typical efficiencies of 85% to 95%. The VOLT 24 regulator can typically support continuous output current between 1.0A and 1.5A. The regulator has built-in reverse-voltage protection, short-circuit protection, a thermal shutdown feature that helps prevent damage from overheating, and a soft-start feature that reduces inrush current.

## Features:

- Input voltage: 24V.
- Output voltage: 12V.
- Typical maximum continuous output current between 1.0 A and 1.5 A.
- Typical efficiency of 85% to 95% depending on the load.
- Switching frequency: 180 kHz
- Integrated reverse-voltage protection, over-current and short-circuit protection, over-temperature shutoff, and soft-start.
- Compact size: 1.75 × 2.00 (45 mm × 50 mm)
- Four mounting holes for M3 screws